



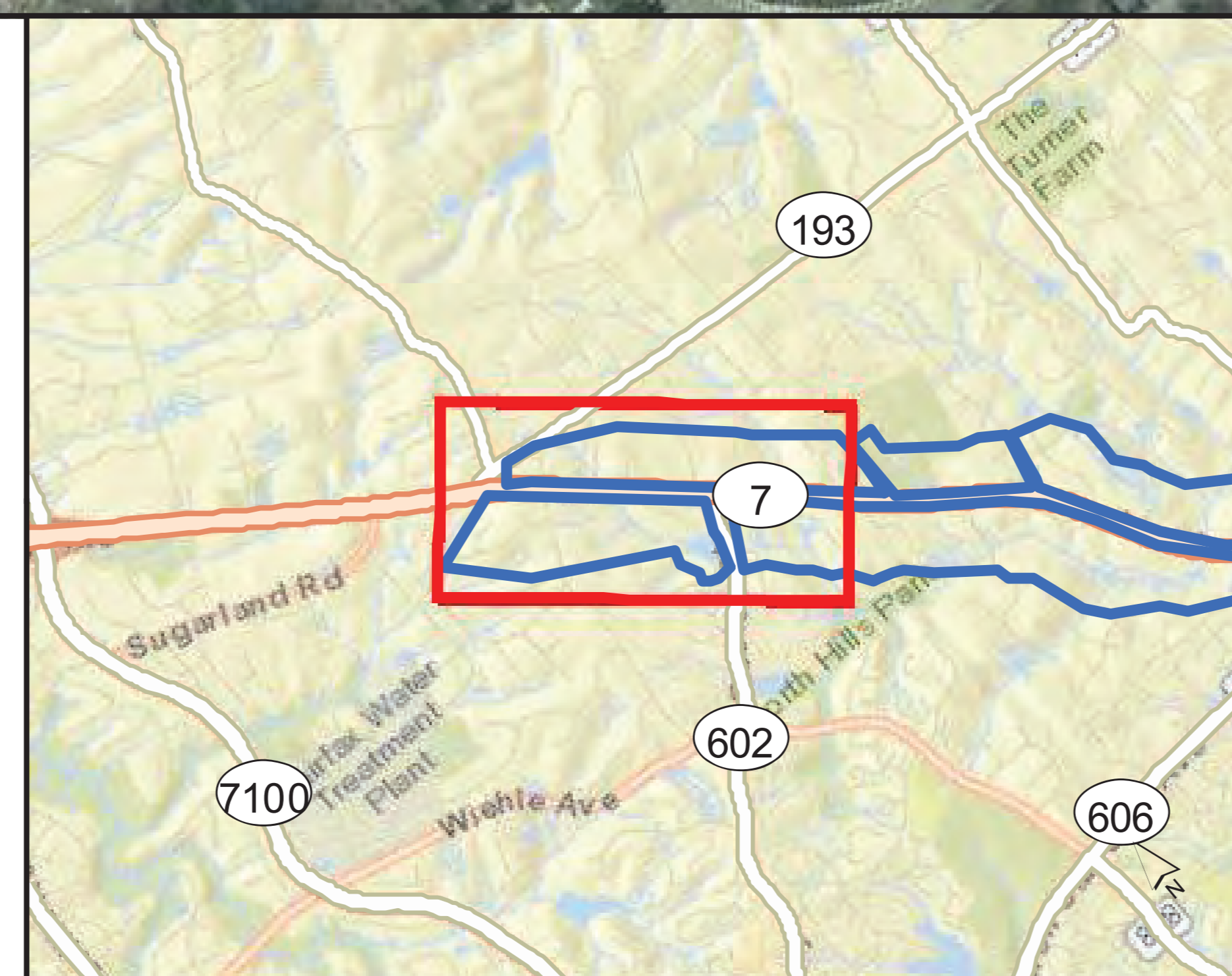
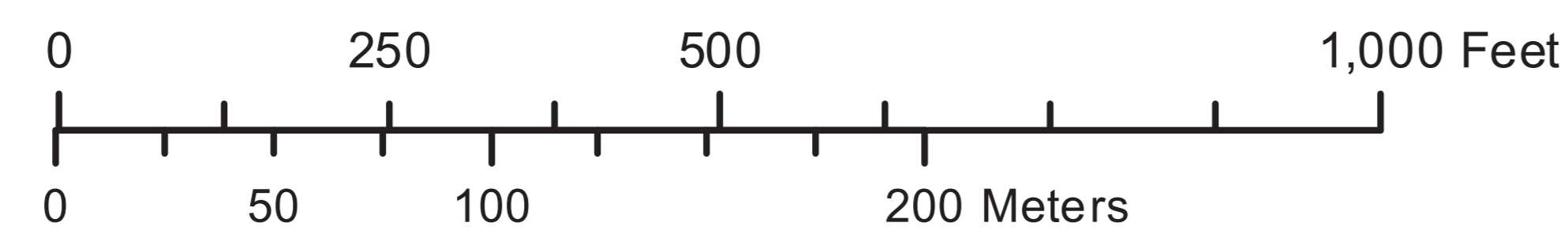
**Modeled Receivers\***

- Not Impacted not Benefited
- ⊕ Benefited not Impacted
- ⊕ Impacted and Benefited
- ⊕ Impacted not Benefited

**Potential Barriers**

- Barrier Feasible and Reasonable
- Barrier Feasible not Reasonable
- Barrier not Feasible
- Existing Barrier Location from UPC 82135

- ★ Monitoring Site
- Design Edge of Pavement
- 66 dB(A) Contour
- CNE Boundary
- 500' Boundary from EOP



**Route 7 Widening Project  
Fairfax County, Virginia  
UPC: 52328**

**Preliminary Noise Report**

State Project 0007-029-128, B610, C502, P102, R202;  
From: Intersection of Route 193  
To: Intersection of Route 267

**Figure: 2 - 1**

**Detailed Study Area Map**



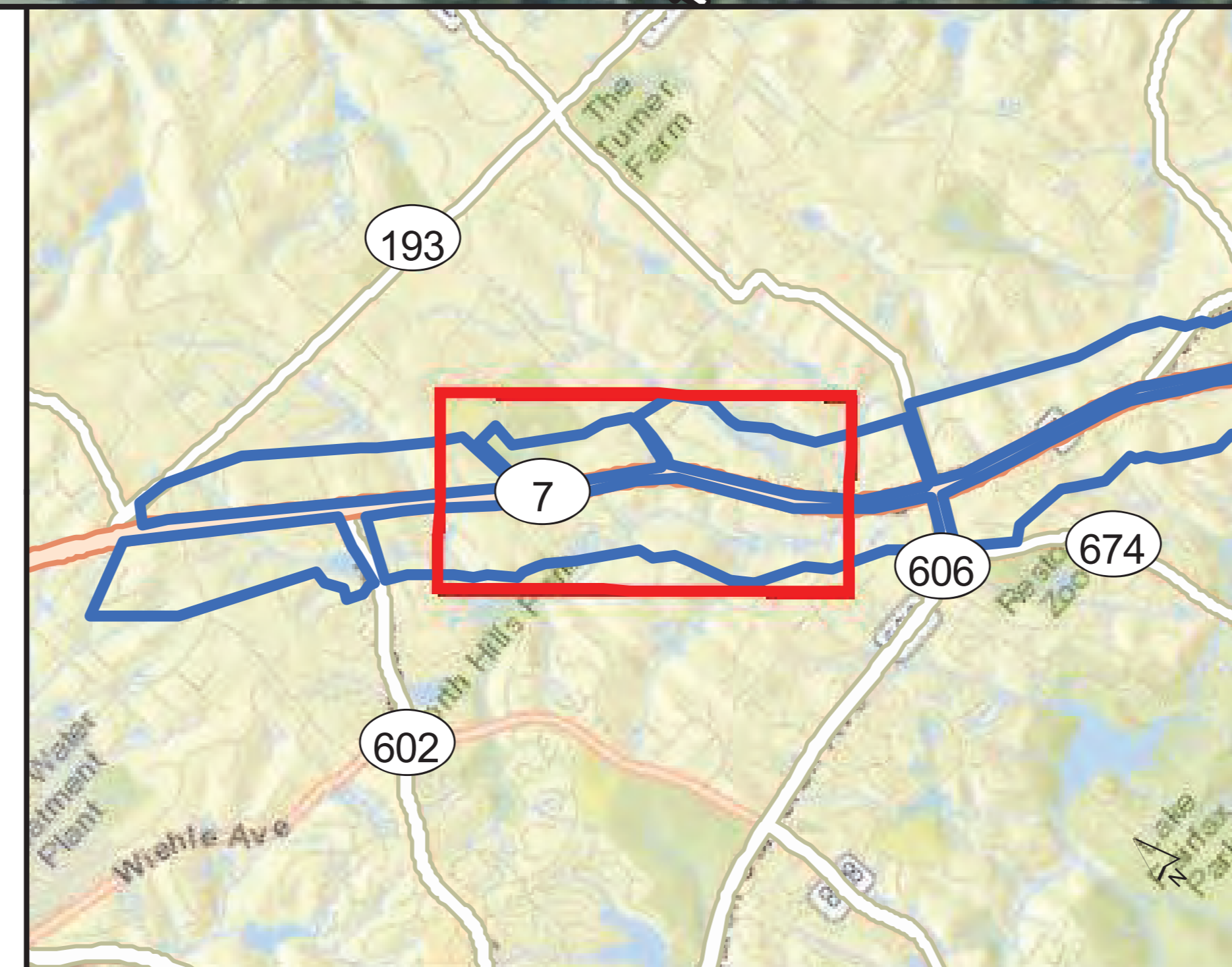
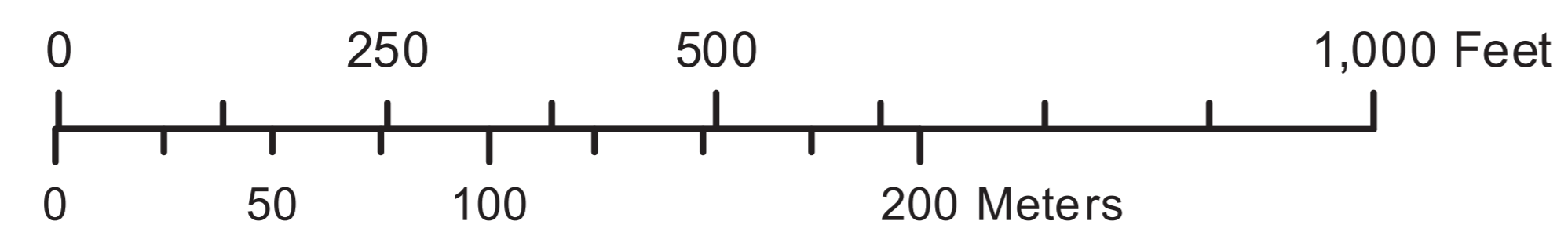
**Modeled Receivers\***

- ⊗ Not Impacted not Benefited
- ⊗ Benefited not Impacted
- ⊗ Impacted and Benefited
- ⊗ Impacted not Benefited

**Potential Barriers**

- Barrier Feasible and Reasonable
- Barrier Feasible not Reasonable
- Barrier not Feasible
- Existing Barrier Location from UPC 82135

- ★ Monitoring Site
- Design Edge of Pavement
- 66 dB(A) Contour
- CNE Boundary
- 500' Boundary from EOP



**Route 7 Widening Project  
Fairfax County, Virginia  
UPC: 52328**

**Preliminary Noise Report**

State Project 0007-029-128, B610, C502, P102, R202;  
From: Intersection of Route 193  
To: Intersection of Route 267

**Figure: 2 - 2**

**Detailed Study Area Map**



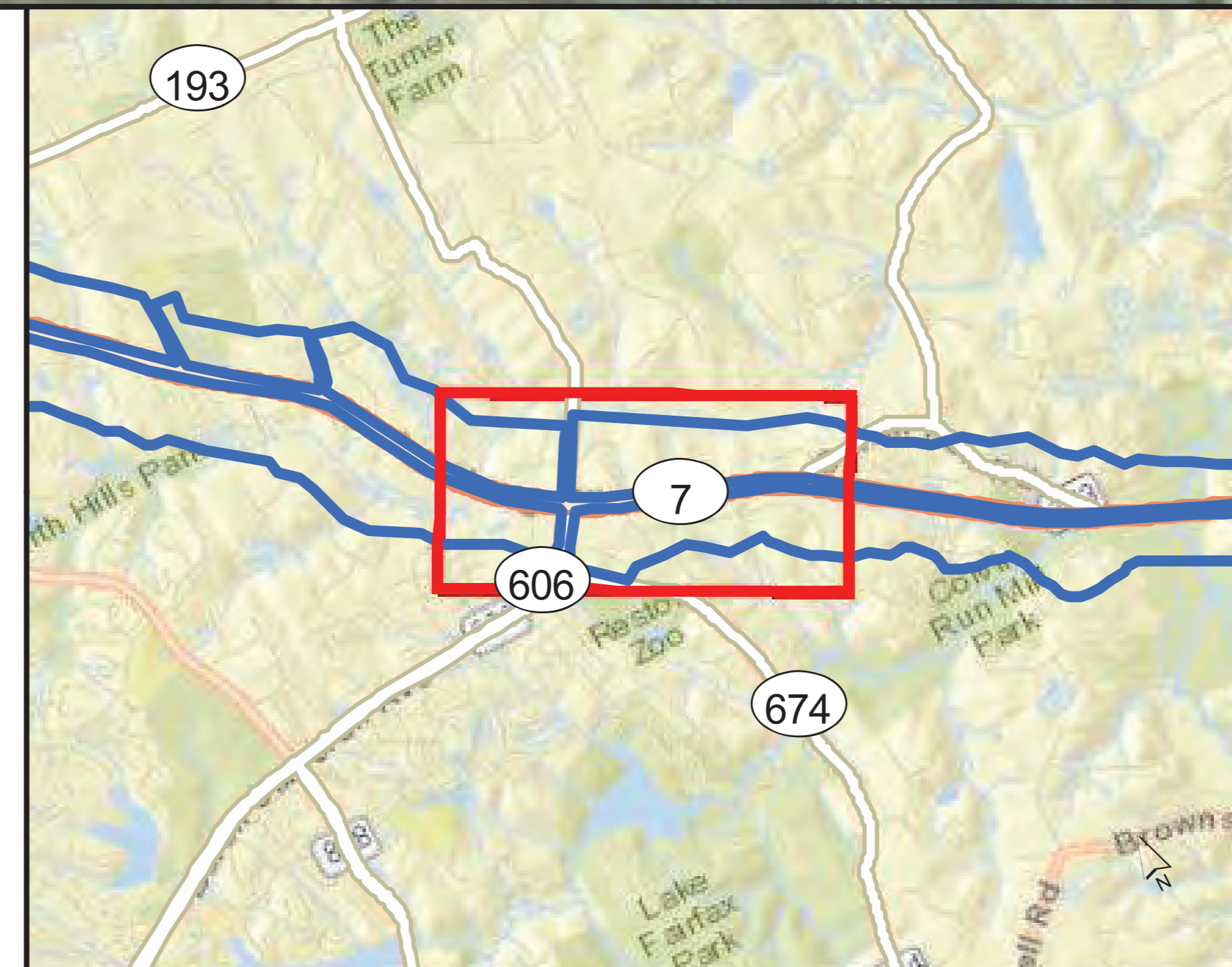
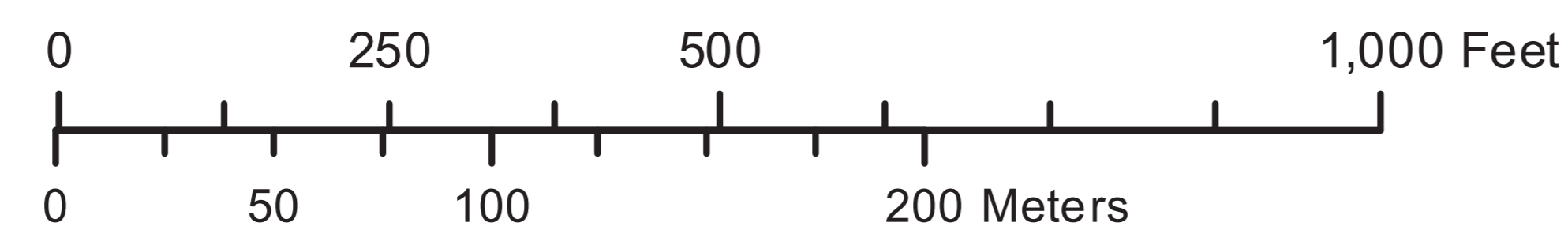
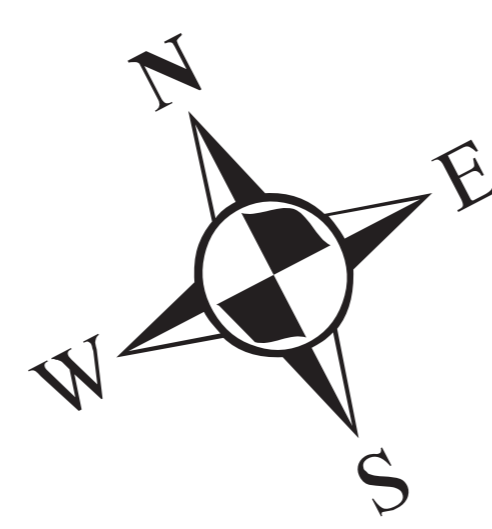
**Modeled Receivers\***

- Not Impacted not Benefited
- ⊗ Benefited not Impacted
- ⊗ Impacted and Benefited
- ⊗ Impacted not Benefited

**Potential Barriers**

- Barrier Feasible and Reasonable
- Barrier Feasible not Reasonable
- Barrier not Feasible
- Existing Barrier Location from UPC 82135

- ★ Monitoring Site
- Design Edge of Pavement
- 66 dB(A) Contour
- CNE Boundary
- 500' Boundary from EOP



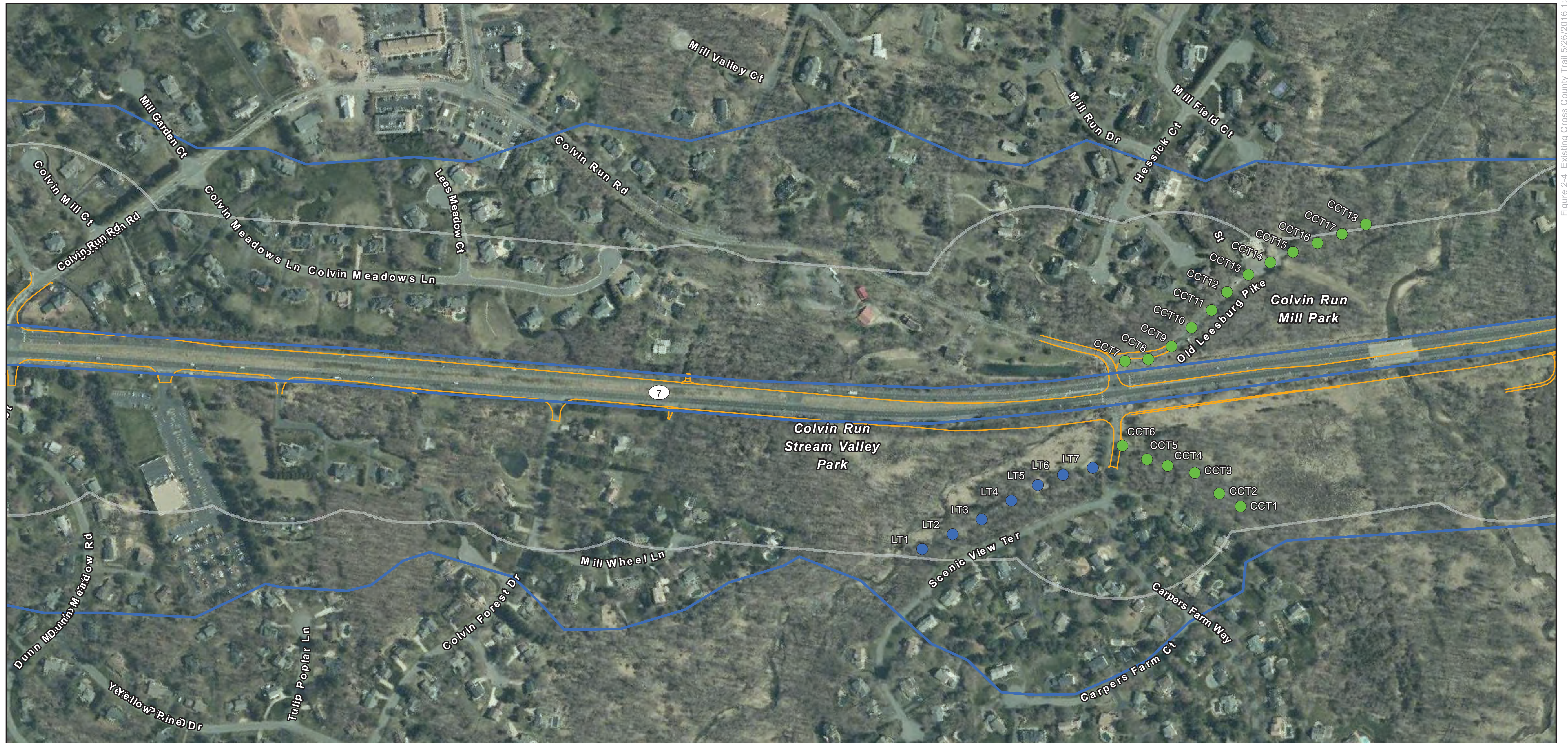
**Route 7 Widening Project  
Fairfax County, Virginia  
UPC: 52328**

**Preliminary Noise Report**

State Project 0007-029-128, B610, C502, P102, R202;  
From: Intersection of Route 193  
To: Intersection of Route 267

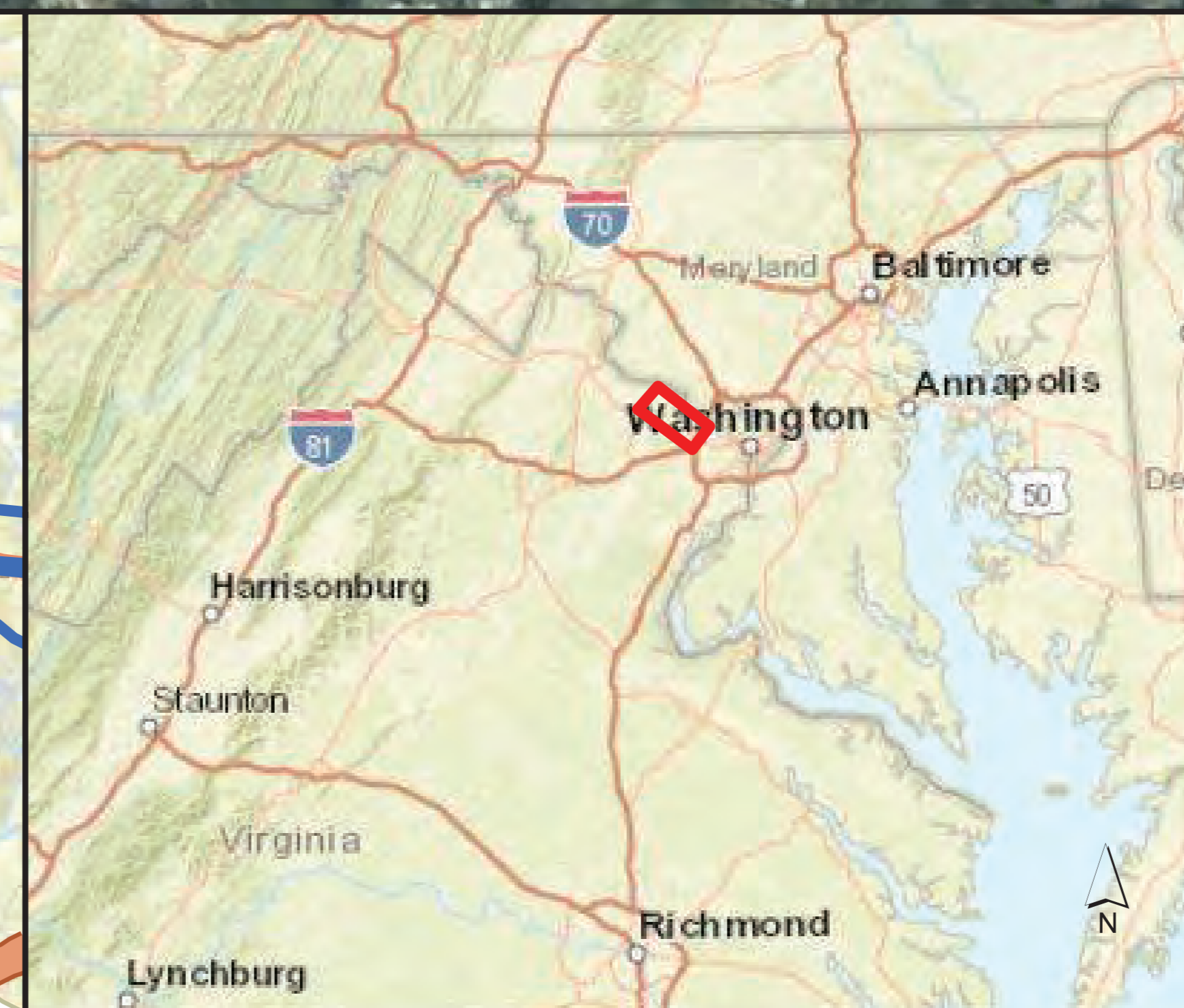
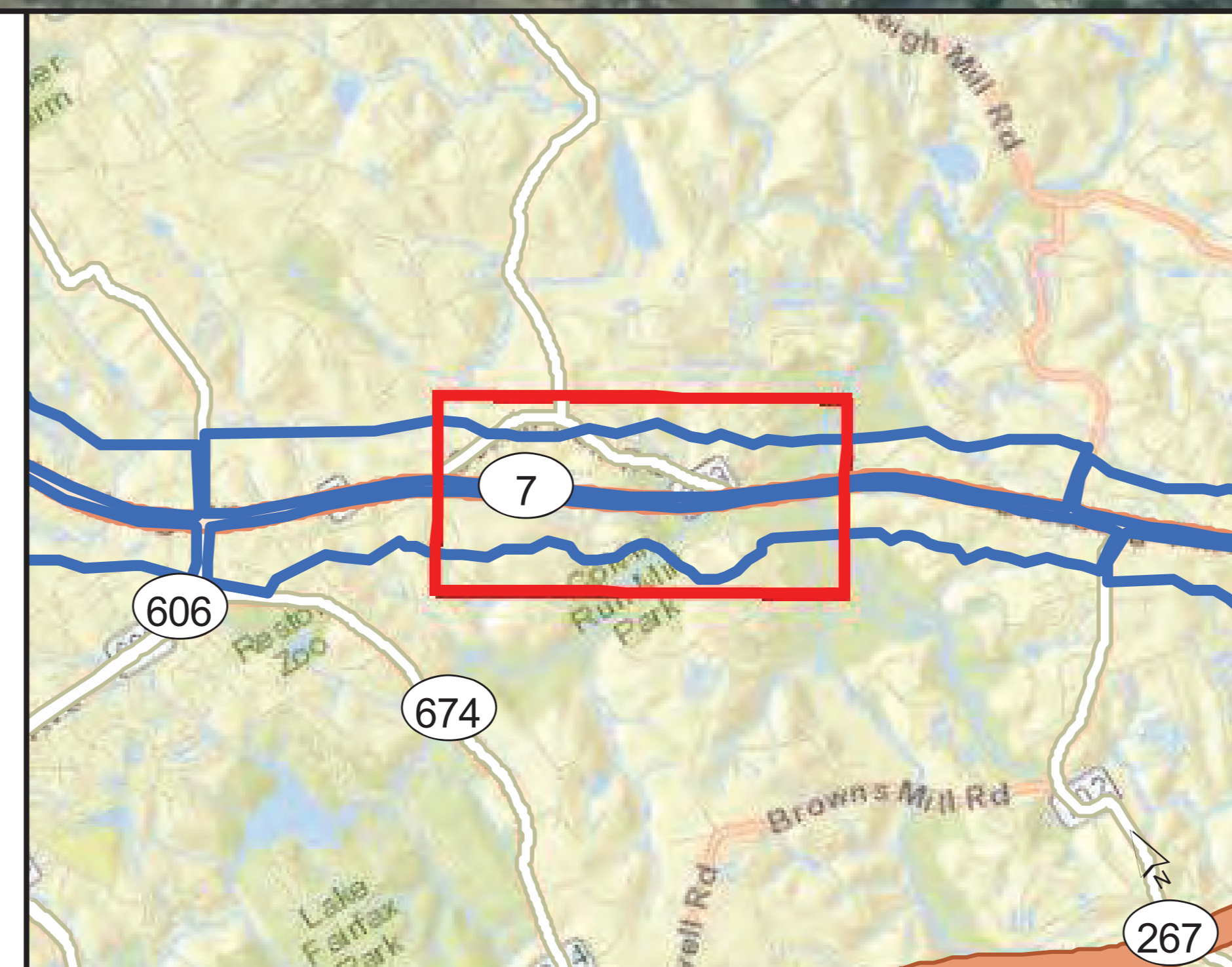
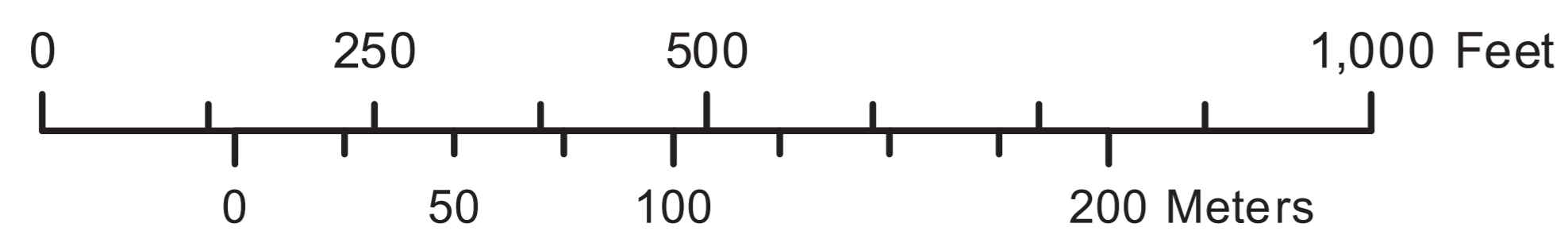
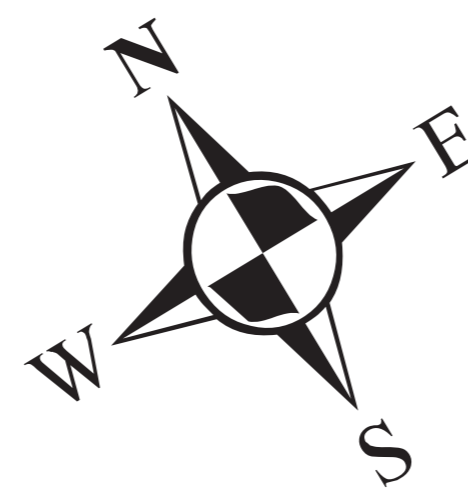
**Figure: 2 - 3**

**Detailed Study Area Map**



**Modeled Receivers**

- Existing Cross County Connector Trail
- Existing Local Trail
- Design Edge of Pavement
- CNE Boundary
- 500' Boundary from EOP



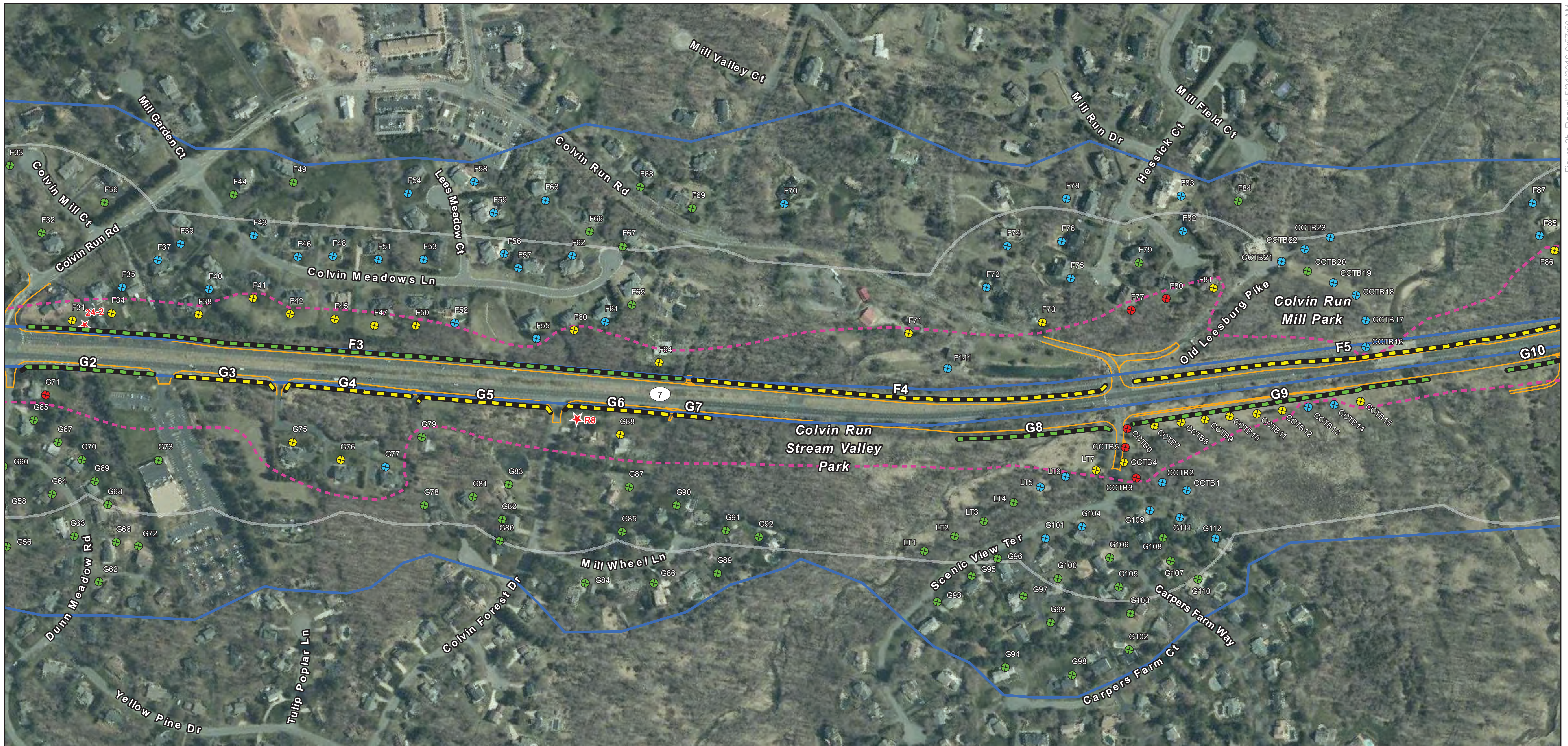
**Route 7 Widening Project  
Fairfax County, Virginia  
UPC: 52328**

**Preliminary Noise Report**

State Project 0007-029-128, B610, C502, P102, R202;  
From: Intersection of Route 193  
To: Intersection of Route 267

**Figure 2 - 4 (Existing Trail Network)**

**Detailed Study Area Map**



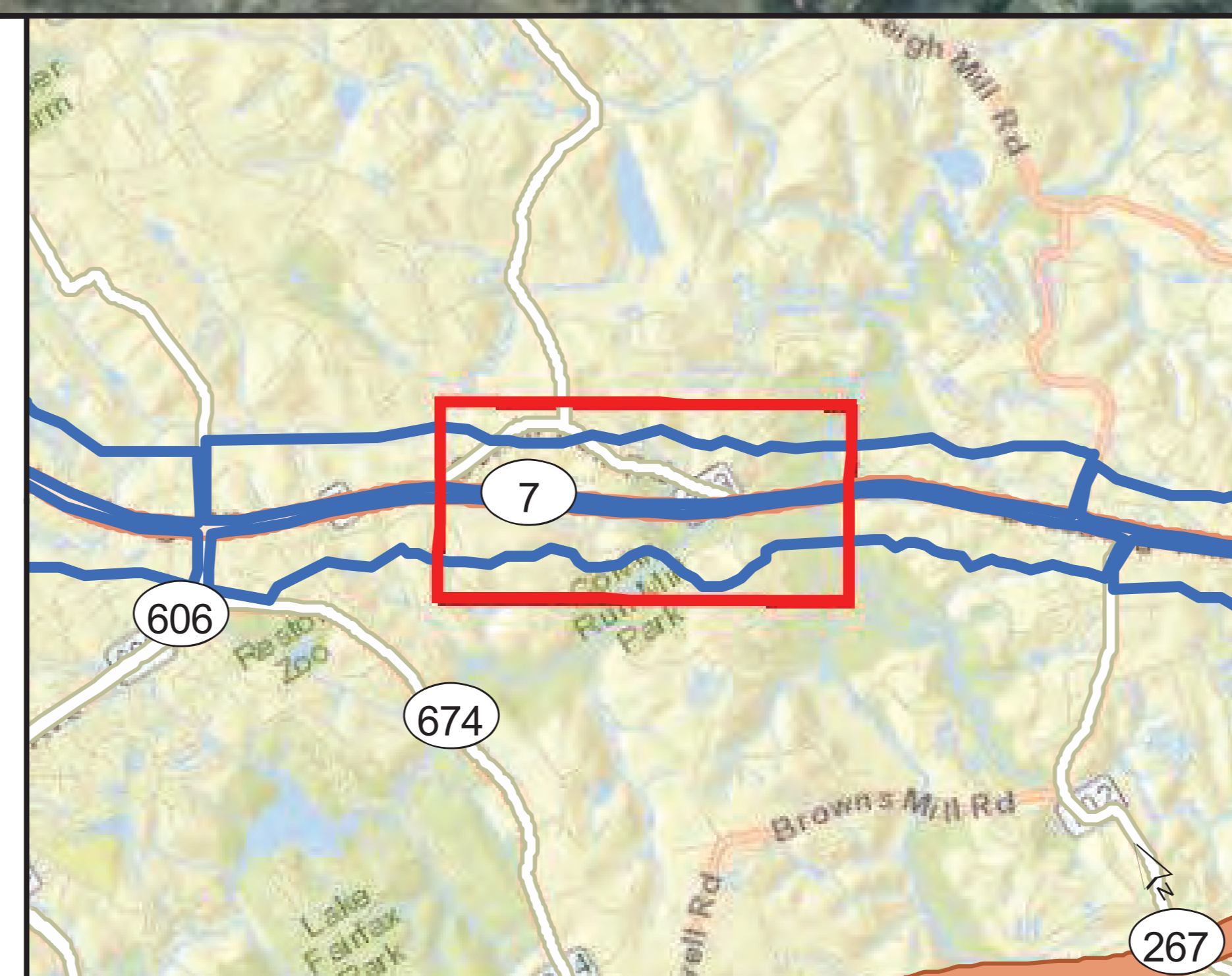
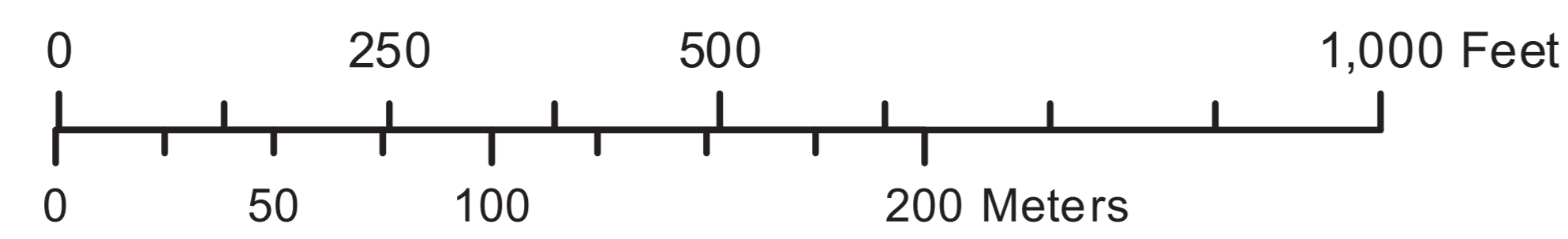
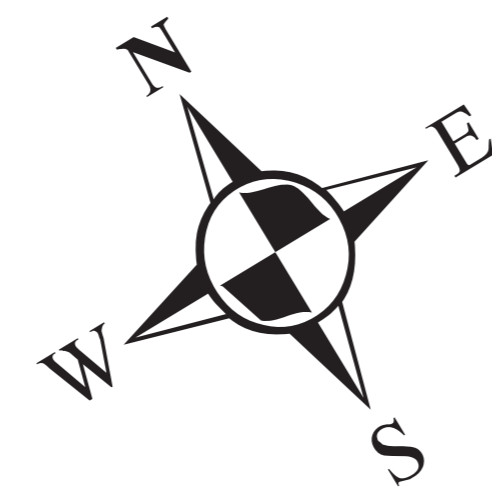
**Modeled Receivers\***

- Not Impacted not Benefited
- Benefited not Impacted
- Impacted and Benefited
- Impacted not Benefited

**Potential Barriers**

- Barrier Feasible and Reasonable
- Barrier Feasible not Reasonable
- Barrier not Feasible
- Existing Barrier Location from UPC 82135

- ★ Monitoring Site
- Design Edge of Pavement
- 66 dB(A) Contour
- CNE Boundary
- 500' Boundary from EOP



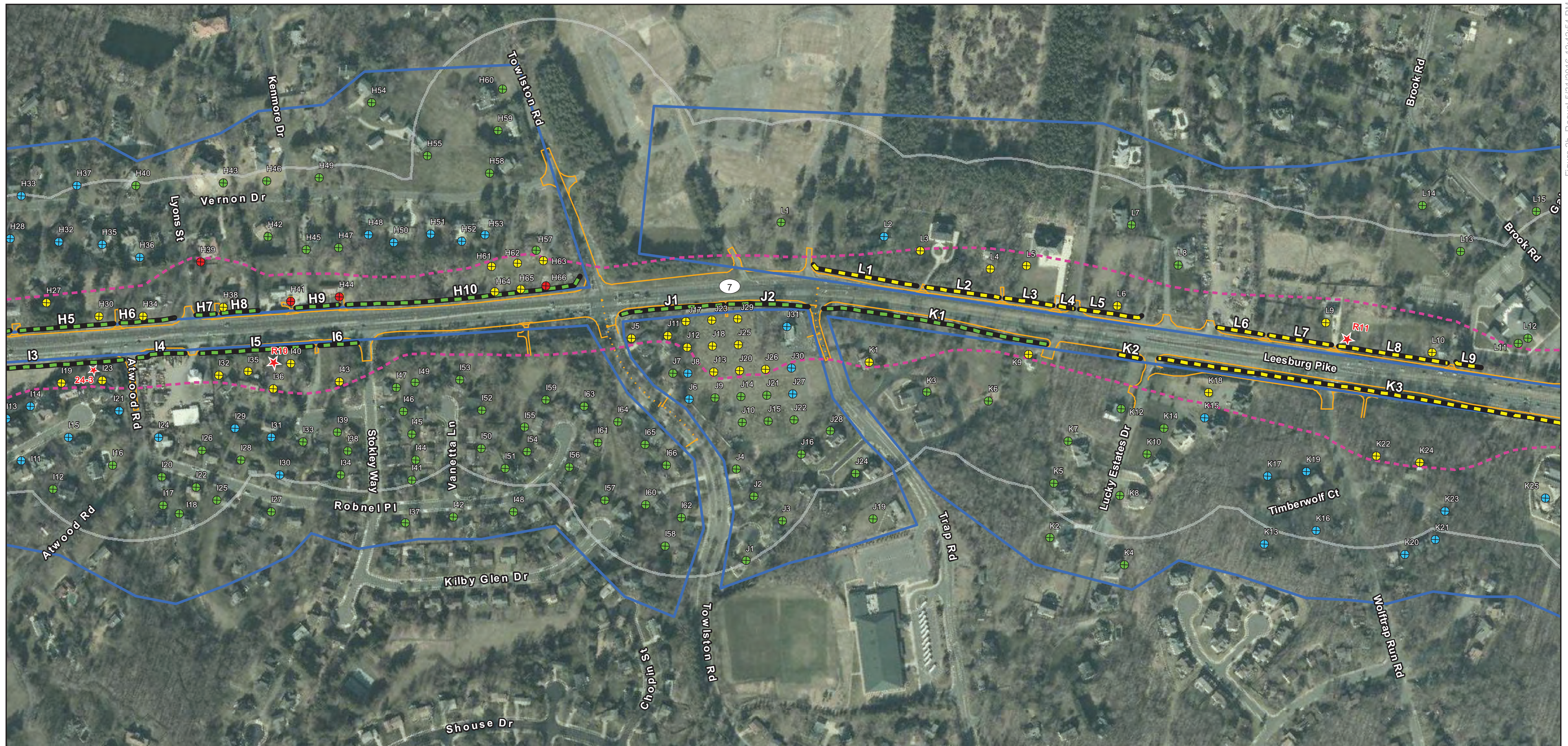
**Route 7 Widening Project  
Fairfax County, Virginia  
UPC: 52328**

**Preliminary Noise Report**

State Project 0007-029-128, B610, C502, P102, R202;  
From: Intersection of Route 193  
To: Intersection of Route 267

**Figure: 2 - 4  
(Proposed Cross County Connector Trail)  
Detailed Study Area Map**





**Modeled Receivers\***

- ⊗ Not Impacted not Benefited
- ⊗ Benefited not Impacted
- ⊗ Impacted and Benefited
- ⊗ Impacted not Benefited

**Potential Barriers**

- Barrier Feasible and Reasonable
- Barrier Feasible not Reasonable
- Barrier not Feasible
- Existing Barrier Location from UPC 82135

**Legend:**

- ★ Monitoring Site
- Design Edge of Pavement
- 66 dB(A) Contour
- CNE Boundary
- 500' Boundary from EOP



**Route 7 Widening Project**  
**Fairfax County, Virginia**  
**UPC: 52328**

**Preliminary Noise Report**

*State Project 0007-029-128, B610, C502, P102, R202;*  
*From: Intersection of Route 193*  
*To: Intersection of Route 267*

**Figure: 2 - 6**

**Detailed Study Area Map**

Aerial imagery courtesy of Esri World Imagery Service 2015



**Modeled Receivers\***

- ⊗ Not Impacted not Benefited
- ⊗ Benefited not Impacted
- ⊗ Impacted and Benefited
- ⊗ Impacted not Benefited

**Potential Barriers**

- Barrier Feasible and Reasonable
- Barrier Feasible not Reasonable
- Barrier not Feasible
- Existing Barrier Location from UPC 82135

**Legend:**

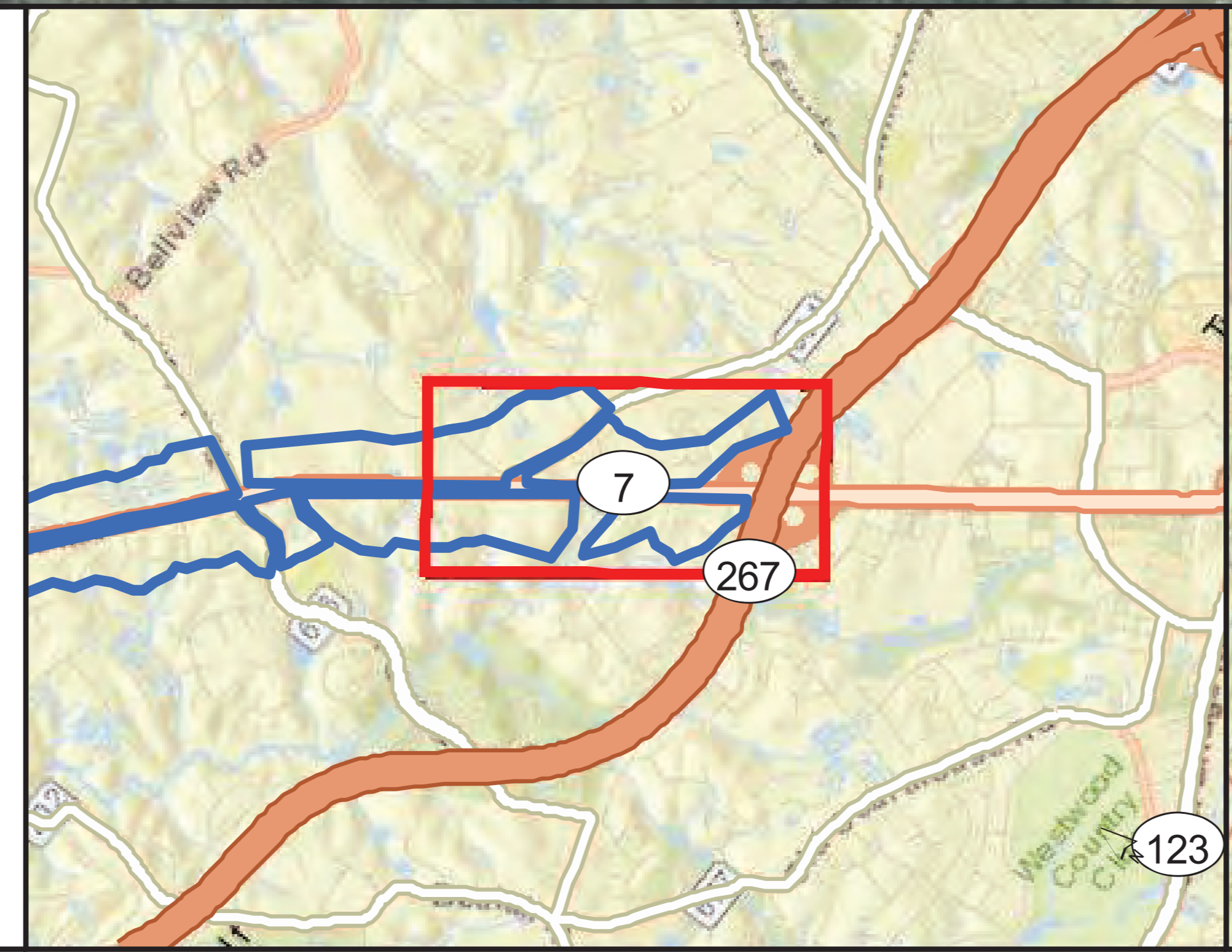
- ★ Monitoring Site
- Design Edge of Pavement
- 66 dB(A) Contour
- CNE Boundary
- 500' Boundary from EOP

**Scale:**

0 250 500 1,000 Feet

0 50 100 200 Meters

**North Arrow:** N, S, E, W



**Route 7 Widening Project**  
**Fairfax County, Virginia**  
**UPC: 52328**

**Preliminary Noise Report**

*State Project 0007-029-128, B610, C502, P102, R202;*  
*From: Intersection of Route 193*  
*To: Intersection of Route 267*

**Figure: 2 - 7**  
**Detailed Study Area Map**

Aerial imagery courtesy of Esri World Imagery Service 2015